

FIND *your* PURPOSE



SUNSHINE COAST
GRAMMAR SCHOOL





MESSAGE FROM THE PRINCIPAL

Mrs Anna Owen

Where Passion Meets Purpose

On behalf of the Sunshine Coast Grammar School community, I am delighted to welcome you to our school. Commencing student intake in 1997, we are a leading co-educational, Christian, independent, inclusive school catering for Prep to Year 12 students, and incorporating the Grammar Early Learning Centre.

Stepping into our school you will see and feel in action a learning community where the staff and students are genuinely connected to a central purpose. This is a school that clearly focuses on nurturing, challenging and engaging students to be the best they can be and pursue their individual areas of interest and passion.

Sunshine Coast Grammar School is grounded in strong Christian beliefs and values that underpin our actions and care for all members of our community. We pride ourselves on our connections with our community and the supportive and caring relationships students establish with their peers and teachers throughout their time at school.

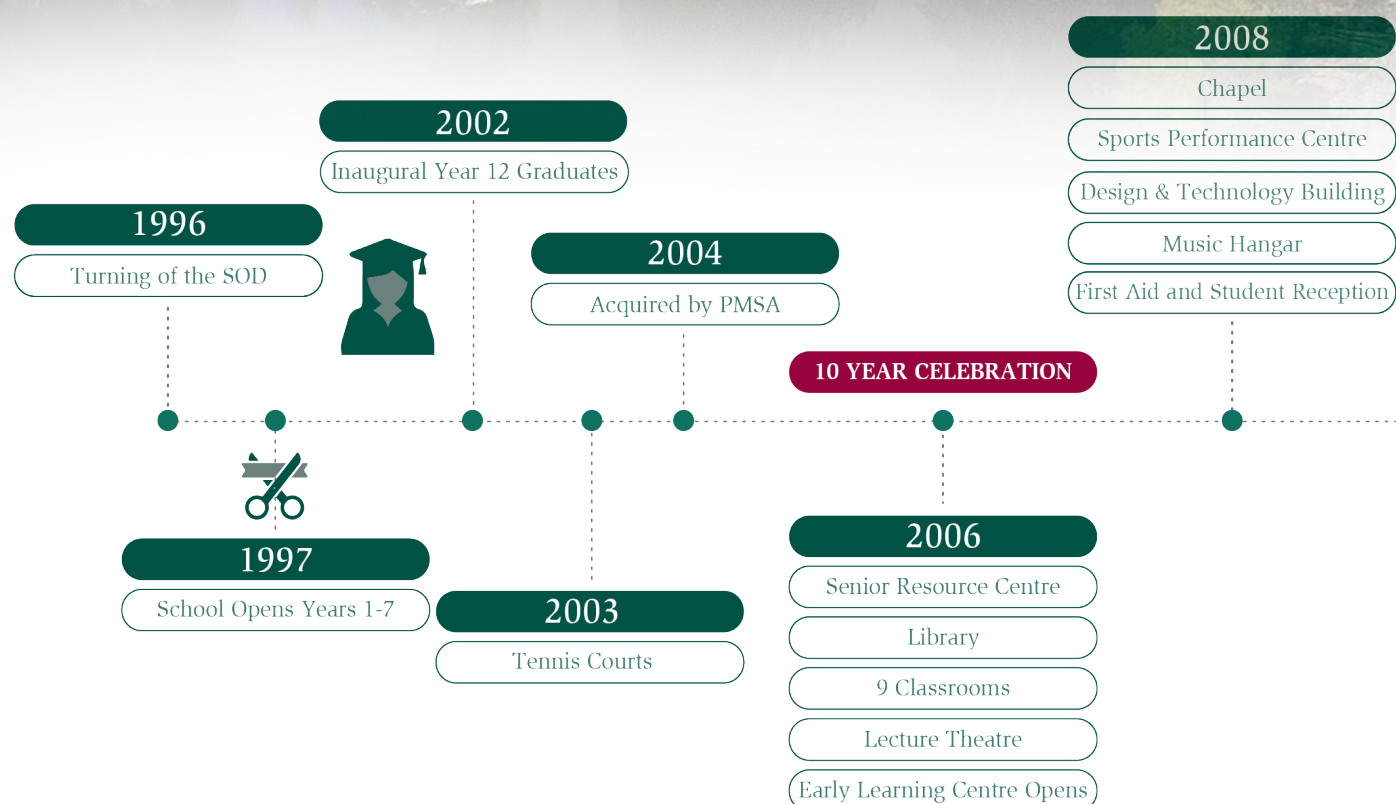
Our vision for learning “*Where Passion Meets Purpose*” exemplified in all that we do and are at Sunshine Coast Grammar School. We have made a purposeful commitment to high quality education and our staff are passionate about their own professional practice to ensure our school is well equipped to support student achievement in all endeavours.

We recognise the importance of preparing our students to contribute locally, nationally and globally in the 21st century and have the digital tools in place to enhance and transform learning. Innovation, creativity, collaboration and problem solving skillsets are vital tools to empower our students as they face their future, and make contributions to their communities in the future.

Sunshine Coast Grammar School recognises the importance of partnering with families in supporting the educational journey of their children. It is an absolute pleasure to invite you into our school where our passion and purpose for students and their individual opportunities are manifests in every action.

Sunshine Coast Grammar School is a proud School of the Presbyterian and Methodist Schools Association (PMSA), joining the distinguished schools of Clayfield College, Somerville House and Brisbane Boys’ College in a great tradition of education that dates back to 1918.

GRAMMAR HISTORICAL TIMELINE





21 YEAR CELEBRATION

2014

Main Oval

Training Oval

2018

Hospitality Refurbishment

2021

Visual Arts Building

2009

Grammar Hall

Grammar Helping Hands
Community Group Established

2017

Grammar Aquatic Centre

New Tennis Centre

2020

New Entry Grammar School Way

Science Precinct

2022

Early Years Centre Opening




SUNSHINE COAST
GRAMMAR SCHOOL



STUDENTS
± 1400



85 %
AUSTRALIAN
BORN

STAFF 
± 160

15 %
AROUND THE
WORLD

FOREST GLEN
SUNSHINE
COAST

 100
ACRES } RAIN
FOREST
SETTING



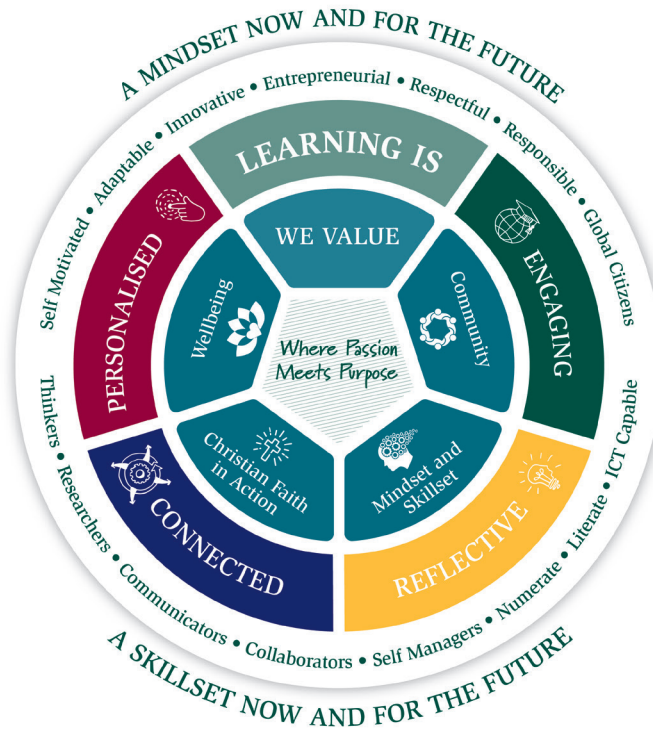
GRAMMAR
EARLY LEARNING CENTRE

Join the pride



A SCHOOL OF THE PRESBYTERIAN AND
METHODIST SCHOOLS ASSOCIATION

OUR VISION FOR LEARNING



ENGAGING.....

When learning is relevant and students are engaged in class, they learn more. It is vital that teachers create the right classroom climate for learning: high expectations; developing a rapport with students; establishing routines; challenging students to participate and take risks. These all affect how much students engage and learn.



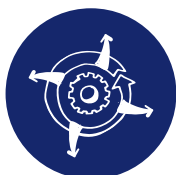
REFLECTIVE.....

Reflection is an integral part of the learning process. It allows students to learn more about themselves and how they learn. Reflection provides an opportunity for feedback and feed forward conversations, as well as the creation of meaningful connections for deep learning.



PERSONALISED.....

Learning is personalised to increase engagement, achievement and personal growth. A commitment to recognising, appreciating, and catering for the variety of characteristics that make individuals unique is key to learner success. Tailoring student learning matches learning needs and supports the development of personal passions and interests.



CONNECTED.....

Learning at Grammar is designed as a continuous pathway. This implies whole school alignment of curriculum and pedagogy, and a shared responsibility for student learning realised through a strong team approach. Meaningful connections are also the result of connecting with prior learning and the application of new knowledge into different contexts. In a digitised world, learning is connected through technology. We are also connected as a Grammar learning community through positive, professional relationships, and a personal relationship with Christ. As global citizens we aim to develop internationally minded people who, recognise their common Humanity, embed sustainable practices, and help to create a better and more peaceful world.

GRAMMAR

EARLY LEARNING CENTRE

Join the pride



As part of our Kindergarten program at Grammar Early Learning Centre we offer specialist lessons in music, sport, swimming, language, dance and literacy.



THE FIRST 5 YEARS OF YOUR CHILD'S LIFE ARE FUNDAMENTALLY IMPORTANT FOR DEVELOPMENT...

The experiences your child will encounter during these formative years will become the foundations that influence their future learning, health and behaviour, shaping them into the adults they will become in the future.

Qualified Early Childhood Teachers embrace the use of their learning space to suit the individual needs of each child. Our rooms are designed to create a positive educational environment through interest areas; places for imaginative play, construction, art and craft, music and movement.

Established in 2006, Grammar Early Learning Centre provides quality care to babies and children from 6 weeks to school age in a safe, warm and stimulating learning environment where quality care is of the highest priority.

Grammar Early Learning Centre recognises it is a great privilege to partner with families in supporting the educational journey of their children.

Book your tour today.

Grammar Early Learning Centre
372 Mons Road, Forest Glen QLD 4556
Phone 07 5453 7077 Email elc@scgs.qld.edu.au
Web www.scgs.qld.edu.au





What we
learn becomes
a part of who
we are





Our Primary School develops the solid foundation for all future learning and success to be built upon now and into the future.

Mr Paul Clegg, Head of Primary

PREP TO YEAR 6 PRIMARY SCHOOL

The Primary School curriculum and learning environment is designed to cultivate curiosity and grow confident, capable and creative learners.

Our teaching nurtures a sense of wonder with which we are all born. Through engaging, real life and personalised learning approaches, we help our students grow as; thinkers, problem solvers, collaborators, self-managers, communicators and researchers through our contemporary approaches to learning.

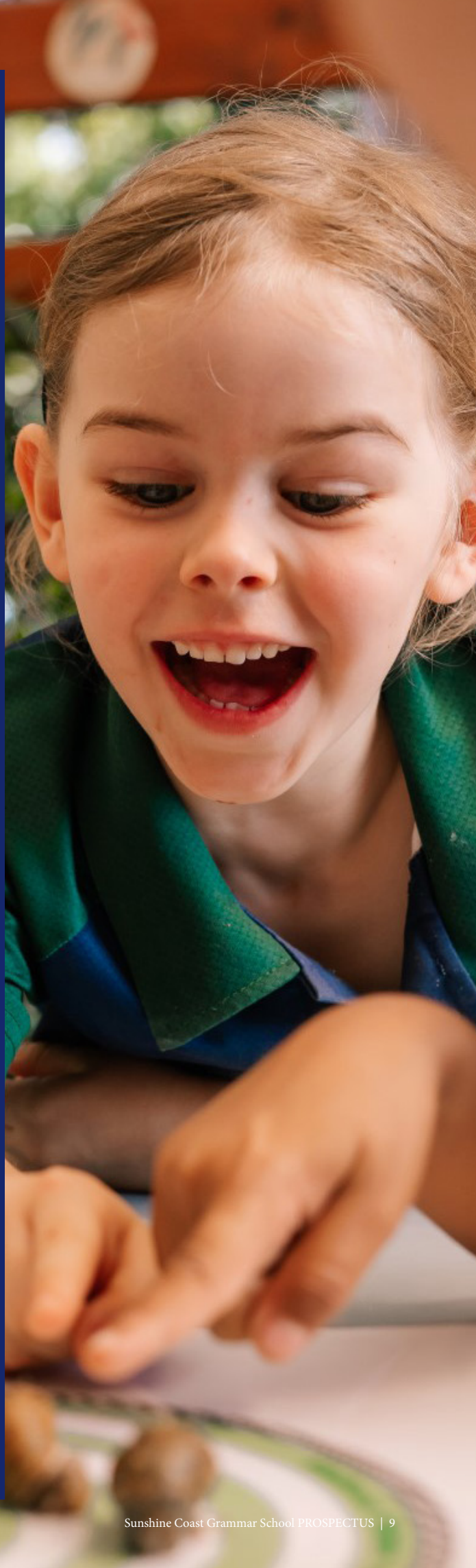
Our Primary School curriculum is planned collaboratively and delivered by individual class teachers covering the Australian Curriculum learning areas of; English, Mathematics, Science, Humanities and Social Sciences, The Arts, Technologies, and Health and Physical Education. In Years 4 – 6, Mathematics classes are formed around the needs of students to assist with differentiating the curriculum.

Specialist teachers engage students in the learning areas of; Christian Studies, Visual Art, Performing Arts, Drama, Physical Education from Prep – Year 6 and the languages of French and Japanese in Years 4 – 6.

Our outstanding resources and quality curriculum prepares students with the mindset and skillset required to thrive now and into the future. We encourage students to develop academic grit, a growth mindset and zest towards learning. We teach students that mistakes are learning opportunities and it is through their attitude, effort, hard work, response to feedback and persistence they achieve personal success.

In our connected, globalised world, students maximise technology to research, create, deepen and personalise their learning. Students and parents have access to our Grammar Education Community Online, GECO. GECO is a virtual learning environment where we share, teach and learn online. In a digitised world, GECO will now provide parents with an opportunity to access information about the curriculum, and your child's learning experiences, any place, anytime through an internet connection.

Our co-curricula program offers a perceptual motor program in Prep, the explicit teaching of chess in Years 1 and 2, a strings program in Year 3 and 4, brass, woodwind and percussion band in Year 5, SOAR extension opportunities, innovation central, Tournament of the Minds, da Vinci decathlon, debating. On top of the co-curricula program is a diverse range of extra curricula offerings, showcased each year at our Grammar Extras Expo. Through our Primary School curriculum, students are inspired and empowered through innovative learning strategies to explore their world and develop a love of learning. Our end goal is to develop successful learners, confident and creative individuals, active and informed citizens.



SECONDARY SCHOOL

YEAR 7 TO YEAR 9

In Years 7 to 9 we endeavour to inspire students to fully engage and challenge themselves to embrace a love of learning each day.

“Find your purpose”

We achieve this through:

*A relevant, meaningful
and rich curriculum*

In which students experience a variety of subjects in line with the Australian curriculum.

Outstanding student welfare

We are renowned for our friendly, supportive environment and individualised care with a focus on student wellbeing.

Specialist teachers

Teaching with a passion in their chosen fields.

World-class, age-appropriate pedagogy

Where students use their individual device for anywhere, anytime access to technology.

YEAR 10 TO YEAR 12

Year 10 to Year 12 builds upon the knowledge, understanding and skills that are cohesively and sequentially developed across all previous years of learning. Year 10 is identified as a time of transition and consolidation in our students' education journey and there is a strong link between Years 7 to 9 and the academic challenges of Years 11 and 12. As such, we further develop and integrate the total learning process at home, at school and in the community. The student remains the focal point in all that we do and our aim is to provide each student with the 21st century skills to act as innovators, entrepreneurs, life-long learners and responsible global citizens.

Our curriculum is designed with a strong academic focus to meet the needs of students considering further studies post Year 12. We also recognise the need to provide suitable pathways for all students throughout the Senior Phase of Learning where opportunities exist for students to be involved in School Based Traineeships and Apprenticeships.

It is acknowledged that, regardless of the pathway taken, all students have an obligation to uphold the specific academic demands that best prepare them for life beyond school.



We encourage our students to take advantage of the numerous opportunities available to them at Grammar so that upon completion of Year 12 they have many options for their future.

Mr Darren MacLeod-Paterson, Head of Secondary





For Grammar teachers there is no greater joy than assisting students to develop, perform and achieve individual goals and personal aspirations.



QUALITY TEACHING

AN INTENTIONAL FOCUS ON IMPROVING STUDENT OUTCOMES

For Grammar teachers there is no greater joy than assisting students to develop, perform and achieve individual goals and personal aspirations.

Each year at Grammar, we have an intentional focus on improving and enhancing student outcomes. Our goal is to nurture and appropriately challenge each student P-12 to exceed their potential.

Grammar teachers see learning through the eyes of their students and students see themselves as their own teachers.

HOW DO WE DO THIS AT GRAMMAR?

1. Applying contemporary educational research to learning, as we know the biggest positive factor influencing student achievement is the quality of our teaching.
2. Investing in teacher development and supporting teachers to undertake professional learning that builds their skillsets, knowledge and capabilities.
3. Continually developing digital literacy- given the world of work our young people will step into.
4. Uniting our teachers in a collective belief of their ability to positively affect students learning through collaboration and appropriate challenge. There is a high expectation to reflect upon the evidence of their impact on student learning.
5. Engaging teachers in meaningful professional conversations with their colleagues about student progress and achievement.
6. Developing effective feedback practices that can greatly improve student learning and teaching quality.
7. Actioning our Vision for Learning through an intentional focus on what visible learning looks and sounds like from Prep through to Year 12. Students will be able to articulate what they are learning, what the next steps in their learning entails and how to act on both informal and formal feedback.
8. Leading and undertaking coaching and mentoring to support important conversations about teaching practice and to learn the specific skillsets required to have those conversations with colleagues to improve practice.
9. Building a culture that supports collaboration and mentoring to enhance teaching practice.

The word 'SOAR' is written in a large, dark green, serif font. A stylized eagle with its wings spread is positioned behind the letters 'A' and 'R', appearing to fly over them. The background of the entire page is a light grey with various faint, hand-drawn icons related to education and science, such as a clock, a lightbulb, a gear, a speech bubble, a DNA helix, and mathematical symbols.

SOAR

Strength • Opportunity • Aspire • Reach

A photograph showing the backs of three students (two boys and one girl) as they stand around a large whiteboard. They are holding markers and appear to be actively drawing or writing on the board. The whiteboard is covered with various hand-drawn diagrams, including arrows, circles, and geometric shapes.

EXTENSION PROGRAMS

SUNSHINE COAST GRAMMAR SCHOOL TAKES PRIDE IN OUR EXTENSION PROGRAMS

Sunshine Coast Grammar School aims to provide students with a variety of engaging programs that ignite curiosity and encourage each student to reach their potential. The School's SOAR program is an academic talent development program specifically designed to meet the needs of students who are capable of high performance with demonstrated achievement and/or potential.

Staff in our Learning Enrichment area hold specialised qualifications including Masters Degree in Gifted Education and the highly regarded Certificate of Gifted Education (COGE). Sunshine Coast Grammar School recognises that children with academic potential have unique educational needs. Tracking these students from Prep through to Year 12 enables us to cater effectively with a seamless approach.

We ensure that we cater effectively for our academically able students by:

- Providing multifaceted identification procedures
- Offering a range of diverse provisions based on the age and stage of the students. These may include extension literacy and numeracy groups, extension classes, competitions, incursions and excursions, compacting and differentiating the curriculum
- Supporting staff in the classroom to address the needs of these unique students
- Developing high quality programs and services.



DISCOVER OUR
**WORLD
CLASS
FACILITIES**
*Set in a
100 acre natural
rainforest playground*





SPORT

Sunshine Coast Grammar School provides outstanding sporting opportunities for students. We offer a wide range of sports catering for boys and girls of all ages. The emphasis is on participation, developing skills and enjoyment.

Our sporting teams have enjoyed significant success across many arenas. Grammar teams have won Regional, State and Australian titles across a range of sports and Grammar students have successfully represented Australia, Queensland and the Sunshine Coast. The school also hosts numerous visiting interstate and overseas school teams during the course of each year. Grammar offers students overseas sport tours.

Grammar sport is a values based program. Of greater importance than on-field results achieved over the years is the continued strength of our community, working together to develop young men and women of character. Sport at Grammar is about ensuring that we develop outstanding young people who understand success is about participation, discipline and commitment.





THE ARTS

Students studying the Arts at Grammar have the opportunity to experience a range of disciplines. Through the Arts, students learn to express their ideas, thoughts and opinions as they discover and interpret the world.

VISUAL ART

Here at Grammar we encourage students to reach their creative and expressive potential. Our Visual Art program in both Primary and Secondary encourages students to make, respond and display artworks with confidence and individuality. It offers students an eclectic range of material and conceptual experiences and a diversity of colourful, dynamic learning environments. Visual Art promotes critical, cultural and aesthetic understandings through participation in the processes of the making experience.

PRIMARY SPEECH AND DRAMA

The Primary Speech and Drama program provides students with opportunities to explore and express ideas and feelings. The program aims to develop clear and effective speech and communication skills, build confidence and self-esteem and support and enhance oral and dramatic presentations.

SECONDARY DRAMA

The Secondary Drama program provides students with the opportunity to develop higher intellectual skills, empathy, social, linguistic and communication competencies. The study of Drama is a unique way for students to blend intellectual and emotional experience, in order to help define their identity both within their own community and broader society.



MUSIC

Our Curriculum and Instrumental Music programs complement each other, working together to develop a rounded musician; one who will see music when listening to it, hear music when reading it, and feel music when playing it.

Sunshine Coast Grammar School has an outstanding reputation for Music Performance. When a student learns an instrument they are exposed to a powerful learning environment. One that is academically stimulating, social and fun. The benefits of learning to be a musician are endless. Fundamental to the study of Music at Grammar is the development of creativity and expressiveness, which goes hand in hand with fostering self-discipline, concentration, listening skills and fine motor skills. Students who study Music at Grammar will gain insight, discover sensibility and learn to balance self-discipline with artistic freedom. The study of Music develops an enduring love of and lifelong involvement with music.

At Grammar, we place a strong focus on the pursuit of performance excellence while maintaining our philosophy that learning should be fun. As such, we offer excellent tuition employing highly skilled and experienced instrumental tutors and ensemble directors, a wide range of instruments from which to choose and vast performance opportunities through participation in various ensembles.

Music is a subject, an activity, a vocation and has the capacity to shape students' identity and emotions, and collectively it can unite us toward a common goal. Music instils tenacity, independence and resilience. Playing or singing in an ensemble develops valuable teamwork skills, pro-social behaviour, social cohesion and inclusion. Research has shown that learning music for more than two years leads to an improvement in; comprehension, literacy, attention, focus and psychological wellbeing.





GRAMMAR CHAPEL

COMMUNITY

At Sunshine Coast Grammar School, we pride ourselves on looking outward to others and serving our community with passion and purpose. Built on our strong Christian ethos, we believe in encouraging faith in action.

Through our Christian Studies programs, students from Prep – Year 12 are informed about the life, death and rising of Jesus Christ. They are given the opportunity to develop their faith and in doing so have the opportunity to participate in voluntary Christian groups, Family Chapel Services and more. A number of opportunities are also available to all at Sunshine Coast Grammar which ensure that we are doing all we can to assist those who need a ‘helping hand’.

Through giving their time and energy, students develop a strong sense of community engagement and build empathy for those less fortunate.

From overseas charity organisations to local Sunshine Coast based charity groups, Grammar students are encouraged to extend a hand of support to those in need.



WE BELIEVE IN DEVELOPING A...

MINDSET FOR THE FUTURE



COLLABORATE

PROBLEM
SOLVE



DIGITALLY
LITERATE



CRITICAL
CREATIVE THINKER

GLOBAL CITIZEN

CREATE



INNOVATE



IT'S AN
EDUCATION
evolution



Learning is
the only
thing the mind
never exhausts,
never fears and
never regrets.

Leonardo da Vinci



Purpose directs
passion and passion
ignites purpose

Rhonda Britten



SUNSHINE COAST
GRAMMAR SCHOOL

Where Passion Meets Purpose

372 Mons Road, Forest Glen Queensland 4556 Australia telephone +61 7 5445 4444

email enquire@scgs.qld.edu.au web www.scgs.qld.edu.au

ABN 40 192 147 977 CRICOS Provider 02537F

A School of the Presbyterian and Methodist Schools Association