



SUNSHINE COAST
GRAMMAR SCHOOL



RISE WITH DISTINCTION



Noosa

Maroochydore

Mooloolaba

Maroochydore Road

Explore our 100 acre natural Rainforest Playground



Kawana

Sunshine Coast University Hospital

Caloundra

We're Closer Than You Think

MESSAGE FROM THE PRINCIPAL

Where Passion Meets Purpose

Mrs Anna Owen

On behalf of the Sunshine Coast Grammar School community, I am delighted to welcome you to our school. We are a leading co-educational, Christian, independent school, catering for Prep to Year 12 students.

Stepping into our school you will see and feel in action a learning community where the staff and students are genuinely connected to a central purpose. This is a school that clearly focuses on nurturing, challenging and engaging students to be the best they can be whilst pursuing their individual areas of interest and passion.

Sunshine Coast Grammar School is grounded in strong Christian values and these underpin our actions. We pride ourselves on our connectedness to each other and the supportive and caring relationships students establish and maintain with their peers and teachers throughout their time at school.

Our vision for learning, “Where Passion Meets Purpose”, is exemplified in all that we do at Sunshine Coast Grammar School. We have made a purposeful commitment to high quality education and our staff are passionate about their own professional practice to ensure our school is well equipped to support student achievement in all endeavours.

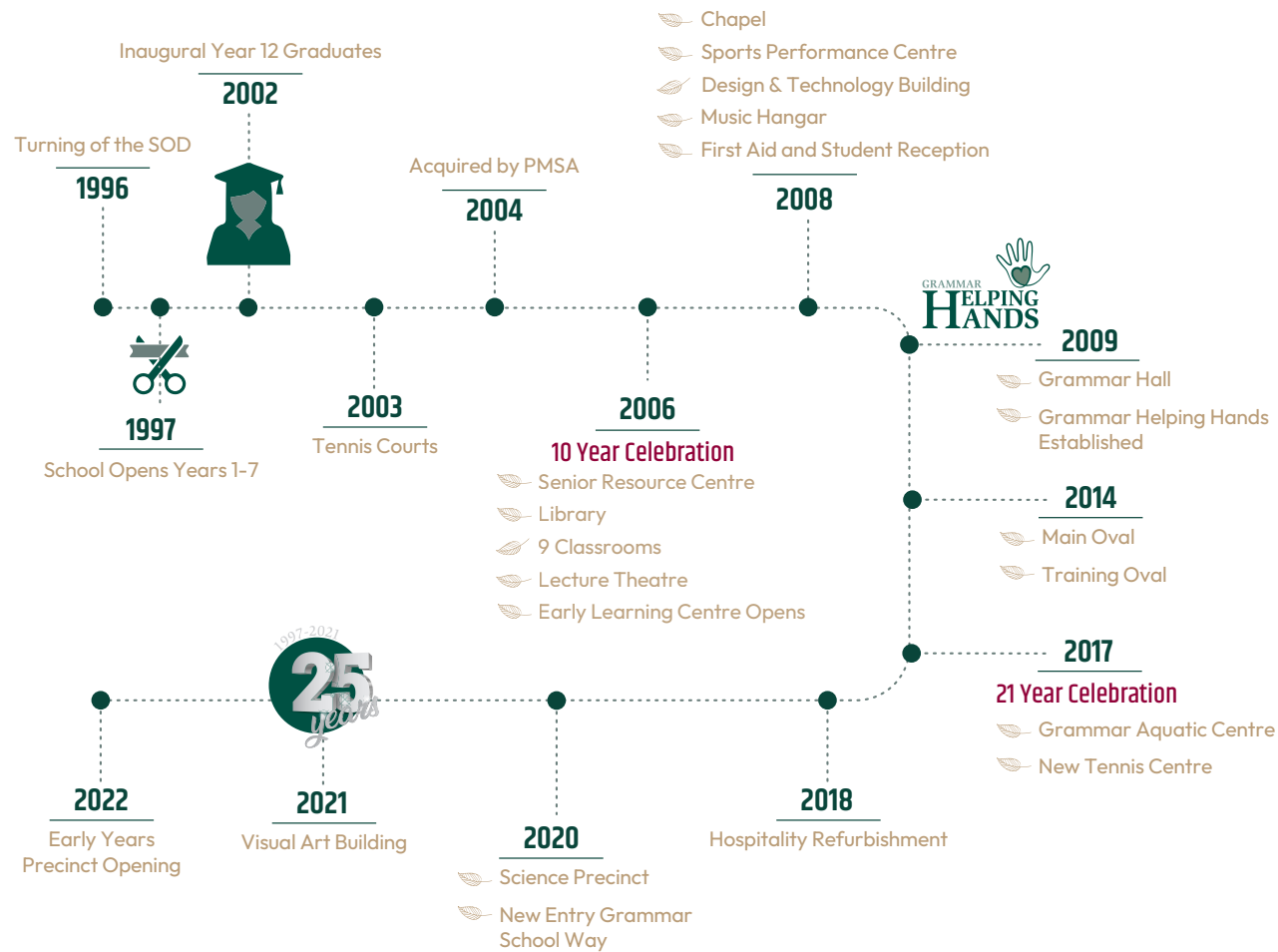
We recognise the importance of preparing our students to contribute locally, nationally and globally in the 21st century, and we are equipping our students with the digital tools to enhance and transform learning. Innovation, creativity, collaboration and problem solving skillsets are vital tools to empower our students as they face their future, and make contributions to their community.

Sunshine Coast Grammar School recognises it is indeed a great privilege to partner with families in supporting the educational journey of their children. It is an absolute pleasure to invite you into our school where our passion and purpose for students and their individual opportunities are supported in every action.

Sunshine Coast Grammar School is a proud School of the Presbyterian and Methodist Schools Association (PMSA), joining the distinguished schools of Clayfield College, Somerville House and Brisbane Boys’ College in a great tradition of education which dates back to 1918.



HISTORICAL TIMELINE





OUR VISION FOR LEARNING

A Mindset Now and For The Future



ENGAGING

When learning is relevant and students are engaged in class, they learn more. It is vital that teachers create the right classroom climate for learning: high expectations; developing a rapport with students; establishing routines; challenging students to participate and take risks. These all affect how much students engage and learn.

PERSONALISED

Learning is personalised to increase engagement, achievement and personal growth. A commitment to recognising, appreciating, and catering for the variety of characteristics that make individuals unique is key to learner success. Tailoring student learning matches learning needs and supports the development of personal passions and interests.

REFLECTIVE

Reflection is an integral part of the learning process. It allows students to learn more about themselves and how they learn. Reflection provides an opportunity for feedback and feed forward conversations, as well as the creation of meaningful connections for deep learning.

CONNECTED

Learning at Grammar is designed as a continuous pathway. This implies whole school alignment of curriculum and pedagogy, and a shared responsibility for student learning realised through a strong team approach.

Meaningful connections are also the result of connecting with prior learning and the application of new knowledge into different contexts. In a digitised world, learning is connected through technology. We are also connected as a Grammar learning community through positive, professional relationships, and a personal relationship with Christ. As global citizens we aim to develop internationally minded people who, recognise their common Humanity, embed sustainable practices, and help to create a better and more peaceful world.





QUALITY TEACHING

Reflective practice for best student outcomes

Grammar teachers love what they do. They create engaging lessons to ensure each student is both inspired and challenged in their learning.

Our specialist teachers are knowledgeable and highly skilled professionals who apply a variety of practices to ensure all students experience success; thereby, nurturing a love of learning from P to 12 and beyond the school gates.

A Sunshine Coast Grammar School learner possesses the knowledge, skills and dispositions to embrace challenge. Students are able to set ambitious goals and reflect on their learning in order to reach their full potential.

How do we do this at Grammar?

1. Applying contemporary educational research to learning, as we know the biggest positive factor influencing student achievement is the quality of our teaching.
2. Investing in teacher development such as lead and highly accomplished accreditation, and supporting teachers to undertake professional learning that builds their skillsets, knowledge and capabilities.
3. Continually developing digital literacy - given the world of work our young people will step into.
4. Uniting our teachers in a collective belief of their ability to positively affect students learning through collaboration and appropriate challenge. There is a high expectation to reflect upon the evidence of their impact on student learning.
5. Engaging teachers in meaningful professional conversations with their colleagues about student progress and achievement.
6. Developing effective feedback practices that can greatly improve student learning and teaching quality.
7. Actioning Our Vision for Learning through an intentional focus on what visible learning looks and sounds like from Prep through to Year 12. Students will be able to articulate what they are learning, what the next steps in their learning entails and how to act on both informal and formal feedback.
8. Leading and undertaking coaching and mentoring to support important conversations about teaching practice and to learn the specific skillsets required to have those conversations with colleagues to improve practice.
9. Building a culture that supports collaboration and mentoring to enhance teaching practice.

GRAMMAR

EARLY LEARNING CENTRE

Join the pride

The first 5 years of your child's life are fundamentally important for development

The experiences your child will encounter during these formative years will become the foundations that influence their future learning, health and behaviour, shaping them into the adults they will become in the future.

Qualified Early Childhood Teachers embrace the use of their learning space to suit the individual needs of each child. Our rooms are designed to create a positive educational environment through interest areas; places for imaginative play, construction, art and craft, music and movement.

Established in 2006, Grammar Early Learning Centre provides quality care to babies and children from 6 weeks to school age in a safe, warm and stimulating learning environment where quality care is of the highest priority.

Our Queensland Government approved Kindergarten Program is designed specifically for children aged 4 to 6 years. Our Bachelor Qualified Early Childhood Teachers have years of hands on experience, supported by our Diploma Qualified Educators.





Book your tour today

GRAMMAR EARLY LEARNING CENTRE

Phone 07 5453 7077

Email elc@scgs.qld.edu.au



PRIMARY SCHOOL

PREP TO YEAR 6

The Primary School curriculum and learning environment is designed to cultivate curiosity and grow confident, capable and creative learners.

Our teaching nurtures a sense of wonder with which we are all born. Through engaging, real life and personalised learning approaches, we help our students grow as; thinkers, problem solvers, collaborators, self-managers, communicators and researchers through our research and evidence based approaches to learning.

Our Primary School curriculum, designed to provide strong foundation skills through an inquiry approach to learning, is planned collaboratively and delivered by individual class teachers covering the Australian Curriculum learning areas of; English, Mathematics, Science, Humanities and Social Sciences, The Arts, Digital and Design Technologies, and Health and Physical Education.

Specialist teachers engage students in the learning areas of; Christian Education, Visual Art, Music, Drama, Physical Education from Prep – Year 6 and the languages of French and Japanese in Years 4 – 6.

Our outstanding resources and quality curriculum prepare students with the mindset and skillset required to thrive now and into the future. We encourage students to develop academic grit, a growth mindset and zest towards learning. We teach students that mistakes are learning opportunities and it is through their attitude, effort, hard work, response to feedback and persistence they achieve personal success.

In our connected world students capitalise on a range of digital technology to create, research, collaborate and deepen their knowledge and understanding. Students access a range of technologies to solve problems, analyse concepts, create solutions and showcase their learning. Students and parents have access to GECO to our Grammar Education

Community Online. GECO is a virtual learning environment where we share, teach and learn online. In a digitised world, GECO provides parents with an opportunity to access information about the curriculum, and your child's learning experiences, any place, anytime through an internet connection.

Our program offers a perceptual motor program in Prep, the explicit teaching of chess in Year 1 and Year 2, a strings program in Year 3, a band program in Year 5 and a surf awareness PE unit in Year 6.

SOAR extension opportunities include weekly workshops focusing on critical thinking and problem solving skills through maths, philosophy, and STEAM, with opportunities to participate in the da Vinci decathlon, GATEWAYS immersions days and debating and entrepreneurship program.

Through our Primary School curriculum, students are inspired and empowered through innovative learning strategies to explore their world and develop a love of learning. Our vision is to develop successful learners, confident and creative individuals, active and informed citizens, leaning into their strengths, passions and wonders of the world around them.

SECONDARY SCHOOL

YEAR 7 TO YEAR 9

In Years 7 to 9 we endeavour to inspire students to fully engage and challenge themselves to embrace a love of learning each day and find their purpose.

We achieve this through:

A relevant, meaningful and rich curriculum

In which students experience a variety of subjects in line with the Australian curriculum.

Outstanding student welfare

We are renowned for our friendly, supportive environment and individualised care with a focus on student wellbeing.

World-class, age-appropriate pedagogy

Where students use their individual device for anywhere, anytime access to technology.

Specialist teachers

Teaching with a passion in their chosen fields.

SECONDARY SCHOOL

YEAR 10 TO YEAR 12

Years 10 to 12 builds upon the knowledge, understanding and skills that are cohesively and sequentially developed across all previous years of learning.

Year 10 is identified as a time of transition and consolidation in our students' education journey and there is a strong link between Years 7 to 9 and the academic challenges of Years 11 and 12. As such, we further develop and integrate the total learning process at home, at school and in the community.

The student remains the focal point in all that we do and our aim is to provide each student with the 21st century skills to act as innovators, entrepreneurs, life-long learners and responsible global citizens.

Our curriculum is designed with a strong academic focus to meet the needs of students considering further studies post Year 12. We also recognise the need to provide suitable pathways for all students throughout the Senior Phase of Learning where opportunities exist for students to be involved in School Based Traineeships and Apprenticeships.

It is acknowledged that, regardless of the pathway taken, all students have an obligation to uphold the specific academic demands that best prepare them for life beyond school.







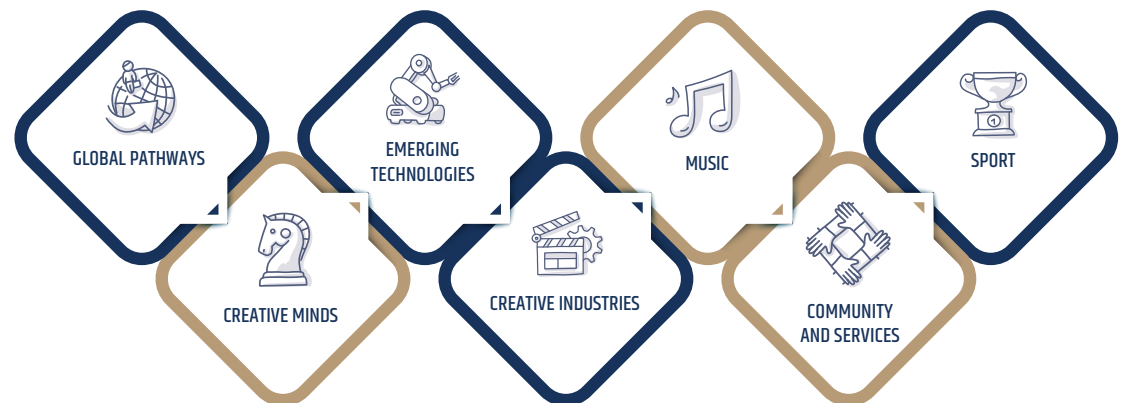
GRAMMAR *Life*

Outstanding Co-curricular Opportunities

Sunshine Coast Grammar School enjoys a rich and extensive co-curricular program. We highly value the important role these programs play in your child's journey.

Our wonderful co-curricular offerings align with our philosophy of providing a holistic education and aim to give our students the opportunities to develop confidence and connect with other like-minded students. Our programs are not only designed to encourage participation, but also provide high performance opportunities that allow students to excel.

Whether your child loves chess, tennis or trombone, we aim to find a program that connects them to their passion.





SPORT

Sunshine Coast Grammar School delivers outstanding programs across a variety of sports, that inspire and ignite a passion for sport and lifelong physical activity. Our participation and high-performance programs are led by experienced and nationally recognised coaches and cater for boys and girls of all ages. Grammar Sport delivers engaging and enjoyable programs that develop transferrable life skills alongside key elements of sporting performance.

Sport at Grammar is about ensuring that we create outstanding young people who understand the importance of participation, commitment, teamwork, discipline and respect.

Grammar teams and individual athletes have enjoyed significant success locally, nationally and internationally and we are proud of our high-performance achievements over many years. Our signature program 'Roar Performance' was launched in 2023 and aims to provide aspiring student-athletes with the required support to help them achieve their goals.



OUR VISION

Our vision for the Roar Performance Program is to provide the framework for our aspiring student-athletes to pursue academic and sporting excellence and foster a healthy balanced lifestyle.

PROGRAM RATIONALE

Our core focus is education yet we value strengths outside of the classroom and recognise the heavy training and competition commitments made by our students. With this in mind, the Roar Performance framework offers provision in four key areas – Academic Support, Athlete Development, Pathways and Personal Growth.



THE ARTS

Students studying the Arts at Sunshine Coast Grammar School have the opportunity to experience a range of disciplines. Through the Arts, students learn to express their ideas, thoughts and opinions as they discover and interpret the world.

VISUAL ART

Here at Grammar we encourage students to reach their creative and expressive potential.

Our Visual Art program in both Primary and Secondary encourages students to make, respond and display artworks with confidence and individuality. It offers students an eclectic range of material and conceptual experiences and a diversity of colourful, dynamic learning environments. Visual Art promotes critical, cultural and aesthetic understandings through participation in the processes of the making experience.

PRIMARY SPEECH AND DRAMA

The Primary Speech and Drama program provides students with opportunities to explore and express ideas and feelings. The program aims to develop clear and effective speech and communication skills, build confidence and self-esteem while supporting and enhancing oral and dramatic presentations.

SECONDARY DRAMA

The Secondary Drama program provides students with the opportunity to develop higher intellectual skills, empathy, social, linguistic and communication competencies. The study of Drama is a unique way for students to blend intellectual and emotional experience, in order to help define their identity both within their own community and broader society.

MUSIC

Our Curriculum and Instrumental Music programs complement each other, working together to develop a rounded musician; one who will see music when listening to it, hear music when reading it, and feel music when playing it.

Sunshine Coast Grammar School has an outstanding reputation for Music Performance. When a student learns an instrument they are exposed to a powerful learning environment. One that is academically stimulating, social and fun. The benefits of learning to be a musician are endless. Fundamental to the study of Music at Grammar is the development of creativity and expressiveness, which goes hand in hand with fostering self-discipline, concentration, listening skills and fine motor skills. Students who study Music at Grammar will gain insight, discover sensibility and learn to balance self-discipline with artistic freedom. The study of Music develops an enduring love of and lifelong involvement with music.

At Grammar, we place a strong focus on the pursuit of performance excellence while maintaining our philosophy that learning should be fun. As such, we offer excellent tuition employing highly skilled and experienced instrumental tutors and ensemble directors, a wide range of instruments from which to choose and vast performance opportunities through participation in various ensembles.

Music is a subject, an activity, a vocation and has the capacity to shape students' identity and emotions, and collectively it can unite us toward a common goal. Music instils tenacity, independence and resilience. Playing or singing in an ensemble develops valuable teamwork skills, pro-social behaviour, social cohesion and inclusion. Research has shown that learning music for more than two years leads to an improvement in; comprehension, literacy, attention, focus and psychological wellbeing.





COMMUNITY AND SERVICE

Kindness, empathy, gratitude and service are qualities we highly value at Grammar. Our long-established community and service programs provide students with a wide range of opportunities to assist both people in our community and the health of our planet. Our aim is to nurture students who are caring and compassionate and make valuable contributions beyond Grammar's gates.

The Grammar Green Team, Amnesty International and the Duke of Edinburgh International Award are some of the programs that compliment the work we do with our numerous community charity partners. Additionally, we have embedded the United Nations 'Sustainable Development Goals' across the school.

We are particularly proud of Grammar Helping Hands (est. 2009), which is one of the school's signature programs and has assisted hundreds of families across the Sunshine Coast community.

CHRISTIAN MISSION

At Sunshine Coast Grammar School, we pride ourselves on looking outward to others and serving our community with passion and purpose. Built on our strong Christian ethos, we believe in encouraging faith in action.

Through our Christian Studies programs, students from Prep – Year 12 are informed about the life, death and rising of Jesus Christ. They are given the opportunity to develop their faith and in doing so have the opportunity to participate in voluntary Christian groups, Family Chapel Services and more. A number of opportunities are also available to all at Sunshine Coast Grammar School which ensure that we are doing all we can to assist those who need a 'helping hand'.

Through giving their time and energy, students develop a strong sense of community engagement and build empathy for those less fortunate.

From overseas charity organisations to local Sunshine Coast based charity groups, Grammar students are encouraged to extend a hand of support to those in need.



GRAMMAR

Address 372 Mons Road, Forest Glen Queensland 4556 Australia

Phone +61 7 5445 4444 Email enquire@scgs.qld.edu.au

ABN 40 192 147 977 CRICOS Provider 02537F

scgs.qld.edu.au

A School of the Presbyterian and Methodist Schools Association